

9 Fauna of the Mošnice Landscaped Park

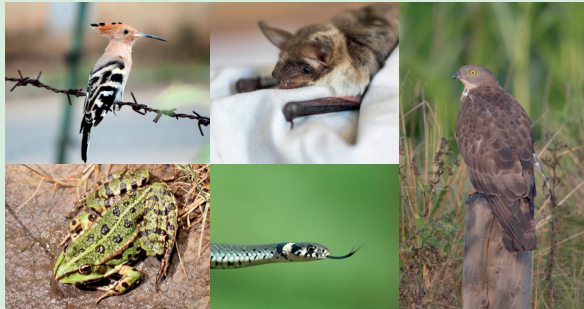
Rare animal species are found in the Mošnice Landscaped Park. The biggest beetle in our country, the stag beetle (*Lucanus cervus*), can be observed on the oak trunks. Eurasian hoopoe (*Upupa epops*) looks for food on the ground (also on horse manure) while bodies of water attract herons and kingfishers.

The Mošnice Landscaped Park is lined with the Elbe from one side. Its oxbow lakes are rich in fish and suitable for angling, and many ducks, herons and partridges are nesting along them.

The locality has been known as a significant entomological area for a long period.

The most important is the long-term presence of a stable population of wood-destroying beetle species, namely the red flat bark beetle (*Cucujus cinnaberinus*) and the hermit beetle (*Osmoderma barnabita*) that are objects of protection. The occurrence of hermit beetles depends on old hollow trees, mainly lime trees and oaks.

The territory is highly regarded also due to the occurrence of the vertebrates – 8 species of amphibians were documented here; 4 reptile species, e.g. the grass snake (*Natrix natrix*); more than 80 bird species, 8 of which are particularly protected.



9 Mošnice Landscaped Park

The Mošnice Landscaped Park is an extraordinary part of the scenery that cannot be found in any other landscape used for breeding and training horses and belonging to stud farms. The park was founded on the site of a former horse park on the right Elbe riverside and originally consisted of two plots of historically different background: the 'old' indigenous Mošnice (west part) was joined by an east plot called 'Strž', which belonged to Zdechovice estate and was the property of Paar noble family until the 19th century.

The park was originally designed as a grazing forest, i.e. meadows with solitary trees or

groups of trees. A horse park in Mošnice is mentioned as early as in 1560.

The English landscape garden was established by the stud farm director Rudolf Motloch in 1895. Adjustments should preliminary apply to an area of 25 ha. Groves were to be designed artistically, or planted additionally. Artistic gardeners were planned to participate in the park adjustment. The total area of the woodlands in Mošnice and Strž subject to the park transformation, or more precisely the meadowland and its park adjustment, extended over an area of 59.84 ha.



10 Pastures

The surviving Pernstein urbaria state that the horse park near Kladruba was founded by the Pernstein family before 1522; it thus belonged to the oldest aristocratic horse parks in Bohemia.

Giving the meadows and grounds a name, many of which survived to these days, has a very old tradition in Kladruba. We can find several names in old maps as early as in the 18th century. 'V Kančínách' should be 'V Končínách' ('In the end-parts') because the Kladruba grounds used to end around here at the Elbe.

Meadows and pastures form the basic element of the Kladruba landscape. They are characteristic of vegetation that is renewed by natural seeding. Autochthonous grass associations enduring grazing as well as trampling grow on the pastureland – perennial ryegrass (*Lolium perenne*), creeping red fescue (*Festuca rubra*), meadow fescue (*Festuca pratensis*), common meadow-grass (*Poa pratensis*), timothy grass (*Phleum pratense*), and white clover (*Trifolium repens*).



11 Solitary trees in Mošnice Landscaped Park

The park in Mošnice extends over an area of 60 ha and is planted with huge solitary trees. The park has served for riding a carriage from the nearby stud farm in Kladruba for over 100 years. An avenue lined with northern red oaks leads from the main road. Its radius was determined by the purpose of the path that did not serve for walking but was reserved for carriage rides. After all, the surrounding park was also designed with respect to the carriage speed. Impressive landscape sceneries open fanwise along the road, respecting the recommendations of contemporary

literature specialized in using the painter's eye perspective in the arrangement of the landscape park.

Using the principles of painter's composition in landscaping consists in intentional planting of coloured trees and shrubs in the openings so that an illusion of larger (deeper) or smaller (shorter) space was created according to a particular compositional task. For example, placing bluish conifers towards the end of the opening gives the impression of deeper space. Dark conifers also seem more distant in the scenery.

12 Forestry in the National Stud at Kladruba nad Labem

Agricultural forests together with meadows and pastures, bottomland forests and the English landscape park in Mošnice represent a substantial part of the landscape around Kladruba. The forests served as a source of high-quality wood, mainly oak wood, in the early days of Kladruba. From the beginning of the building history of the stud farm there were efforts to stop exhausting the wood supply.

The forests also served for frequent hunting and shooting, which formed an integral part of the imperial court representation. The farmstead Kladruba nad Labem became independent of Pardubice estate in the early 1860s.

On this occasion the newly established farm bought a forest complex from the Pardubice estate – a forest belt north of the meadows in the area between Kladruba and Selmice, forests Borek, Kančiny, Mošnice and Merenda were attached.

Apart from wood production for the needs of horse breeding the forest also enabled to train horses both saddled and harnessed – forest roads are mainly straight on a rectangular grid.



Through the landscape for breeding and training of ceremonial carriage horses in Kladruba nad Labem

The trail offers an unusual walk through the Landscape for breeding and training of ceremonial carriage horses in Kladruba nad Labem, which was entered on the UNESCO World Heritage List in 2019. At several stops, you will learn interesting facts about the landscape and its history.



1 In the land of the Kladruba Horses

The National Stud at Kladruba nad Labem is one of the oldest stud farms in the world and at the same time the home of the oldest indigenous Czech horse breed – the Kladruba horse. The Kladruba is the only surviving horse breed that was bred specially for ceremonial purposes of the royal court. The stud farm in Kladruba nad Labem operates to this day and the continuity of breeding carriage horses here was not interrupted.

The Kladruba area represents a unique, perfectly balanced cultural landscape comprising

meadows, pastureland, historic tree avenues, forests, oxbow lakes of the Elbe, irrigation ditches, and historic buildings serving various purposes. The stud farm landscape is a combination of two types of cultural landscape: first, a living landscape, organically developing, with a predominant functional purpose; second, a landscape designed and created by man, representing an exceptionally perfect type of a specialized ornamental farm *ferme ornée* focusing on breeding ceremonial carriage horses.

National Stud Kladruba nad Labem

The project was realized with the financial support from the Ministry of Culture.
www.nhkladruby.cz/en

2 The castle – the history of the stud

The region of the stud farm Kladruby along the river Elbe became populated in the Middle Ages as a result of felling bottomland forests in order to gain quality oak wood. Horses were presumably brought by the woodcutters to do the hard work. The area left after clear-felled bottomland forests could not be used as arable land due to ground water level and regular floods; it provided, however, ideal conditions for horse pastures.

The very name of 'Kladruby' is derived from felling logs by the woodcutters. Kladruby nad Labem were first mentioned in historical sources in 1352; in the 14th and 15th century several owners of Kladruby nad Labem belonging to the ranks of local landed gentry are documented. Only after 1491 Kladruby nad Labem became a part of the Pardubice estate, which belonged to one of the most significant and powerful Bohemian noble families of that time, the Pernstein family. It was them who founded an enclosure for horse breeding before 1522. In 1560 the Bohemian estates bought the whole Pardubice dominion and

gave it to the emperor Maximilian II. The stud at Kladruby nad Labem was founded in later and it was given an Imperial Court Stud Farm status by the emperor Rudolf II on 6th March 1579. The stud specialised in breeding ceremonial carriage horses, the galakarosier, intended solely for the purposes of the imperial court in Vienna.

In 1995 the stud area including the stock herd of both black and grey Kladrubers was designated a cultural monument. The stock herd of white Kladrubers (comprising 65 mares and 4 stallions) along with the stud area was designated national cultural monument early in 2002. The stud farm and the surrounding cultural landscape were listed in the Tentative List of candidates for UNESCO World Heritage Site in 2007. Finally, the Landscape for Breeding and Training of Ceremonial Carriage Horses at Kladruby nad Labem was inscribed in the World Heritage List in 2019. Before, the whole site underwent a wide-ranging restoration in 2014-2015 owing to which it regained its original classical design.

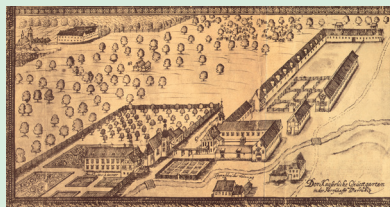


3 Castle gardens

The castle in Kladruby was mentioned together with an east- and south-oriented castle park as early as in the 16th century. After the reconstruction of the castle in the first half of the 18th century, a park was established. In 1757 fire engulfed the whole site, after which the baroque park was never restored. Only in the 1920s the park gained its new shape during the classical reconstruction of the stud farm.

It is evident from the views and maps that there was a French formal garden with strict geometric lines in the immediate vicinity of the castle with an orchard following. The garden was used for the purposes of the castle kitchen that is why

a permanent gardener was present. He also cared for numerous tree alleys planted along the roads and grounds. The garden was landscaped in 1893; a part of the adjustments was establishing an alpine garden and planting of geographically nonindigenous conifers.



4 Stable area Josefov

Josefov, also called Josefovshof, is the newest historic stable farm of the Kladruby area and is situated among the pastures south of Kladruby nad Labem. It only consists of two small stables and a residential building. Remains of a burnt-out pillared barn can be found in the east; rather small pastures connected directly to the stalls are situated in the north-east of the area. An orchard adjoins the pastures in the west, which is also connected to the stable farm by a compositional axis of a fruit tree alley

in the north leading to the main building of the site. The access road to Josefov leads from Rečany road bifurcation that is highlighted by a late-baroque St. John of Nepomuk statue. The Josefov premises are surrounded by high vegetation integrating the site in the landscape of pastures and meadows.

Josefov stables currently serve for stabling part of the stud mares and, if necessary, also for stabling the youngest weaned foals.

5 Stable area Františkov

Stable area Františkov was built according to the project of Mauritz Jahn on an axis to Týnec nad Labem in 1828-1831. The axis runs through the symmetrical arrangement of the farm and continues to infinity (measuring 4.5 km in total) in accordance with the principles of the French formal garden.

The stable area was built during the classical reconstruction of the stud farm and is situated in free pastureland north of Selmice. The farmstead ground is slightly rectangular and is lined

with tree alleys around. The complex consists of actual stables and two residential buildings. At present all stables in the Františkov area are used for breeding young horses (yearlings, two- and three-year-old horses). Foals are transported here at around 6 months of age and are separated into a colt herd and a filly herd afterwards. The foals are bred on surrounding pastures in the daytime and driven to free stables for the night.



6 The water system in the landscape

The Elbe influenced the development of local landscape during the whole stud farm history. Historical sources document many devastating floods that destroyed meadows and pastures repeatedly. Even the largest fishpond network of that time was established in the days of the Pernstein family at its estate, with the Opatovice canal feeding into the fishponds. This artificial channel with the total length of 32.69 km is rightly considered a unique medieval piece of work and a

significant constructional-technical and natural monument in the locality. It was necessary to convey water to water mills, fulling mills, and iron mills. Last but not least, water was needed for irrigation of vast areas. Soil around the Elbe is sandy that is why the channel bed had to be lined with clay to prevent water infiltration.

The sophisticated irrigation system in this area helped to establish a horse park with horses kept freely in the first half of the 16th century.



7 Tree avenues in the area

The buildings in the farmsteads (Kladruby nad Labem, Josefov, Františkov) create three cores of the basic landscape arrangement that is based on impressive, mainly lime tree avenues. The longest tree avenue is located in Selmice and is 3.2 km long. It leads to the gateway of the Františkov farmstead and follows as a 0.75 km long poplar alley towards the farm boundary in the west where it disappears in a medieval path. The tree alley in Rečany is 1.5 km long, in Semín 0.25 km, poplar alley in Kolesa 0.4 km, chestnut tree alley Kaštánka 0.9 km, and oak tree alley 0.6 km. The tree avenues on the stud farm grounds will remind visitors of the so called imperial alleys planted usually in the Habsburg

monarchy since the reign of Charles VI along main provincial paths – imperial roads.

The centre of the composition is not – unlike in Versailles – the gateway to the castle or palace, although the imperial palace in Kladruby nad Labem is part of the farmstead; the focus is on the stable entrance.

The tree avenue in Selmice seemingly ends with a monumental building of the Františkov stables. However, its axis intersects the symmetrically situated portal of the entrance building, follows with a group of trees in the middle of the courtyard that are planted to line the axis, and leads off the farmstead westwards into the pastures where it disappears in the distance.

